

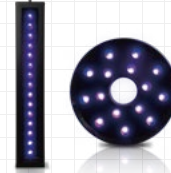
# Ultraviolet Light Ultraviolet series

Light mounted with high output UV\_LED for exciation of fluorescent material.

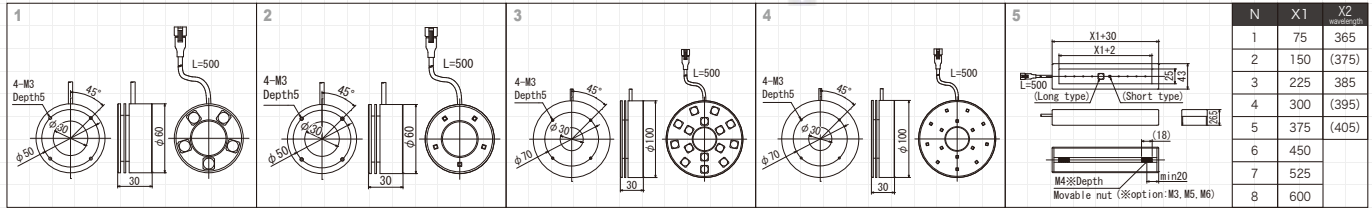
Power LEDs

Model	Light Color	Power Consumption (W)	Input Voltage	SAG (*)	Wavelength (nm)	Power Supply	Drawing
IDHR-60L-UV-(X2)	UV	8	DC24V		365 (375)	ILP-60M2-24 (P.69) IDGB-24 series (P.67)	1
IDHR-60S-UV-(X2)	UV				2		
IDHR-100L-UV-(X2)	UV				3		
IDHR-100S-UV-(X2)	UV	15.4			385 (395)		4
IDBA-CH(X1)L-UV-(X2)	UV				5		
IDBA-CH(X1)S-UV-(X2)	UV				5		

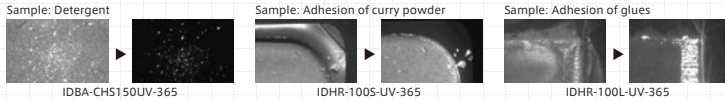
\*The SAG value indicates the maximum voltage setting for SAG power supplies. For details, see page 75.



- This model is compatible with 365 to 405 nm in 10 nm increments of wavelength.
- The standard is 365 and 385 nm. Lights with wavelengths of 375, 395, and 405 can also be custom-manufactured.
- Available for S type(wide-distribution), or L type (narrow-distribution).



**Example of photographed objects** Effect: Optimum for excitation of fluorescent material and inspection of minor scratches.



- ⚠ Precautions for use of ultraviolet light**
- Do not look into direct light or mirror-reflected light from the light source.
  - When using a UV light source, be sure to wear protective goggles.
  - Do not turn on the power to the light-emitting section while it points at somebody's eyes.
  - Wear long-sleeve shirt or gloves to protect your skin from direct contact with illumination.

**Option (lens filter)**

Model	Lens filter diameter
IM-UV-M255	M25.5×P0.5
IM-UV-M270	M27.0×P0.5
IM-UV-M305	M30.5×P0.5

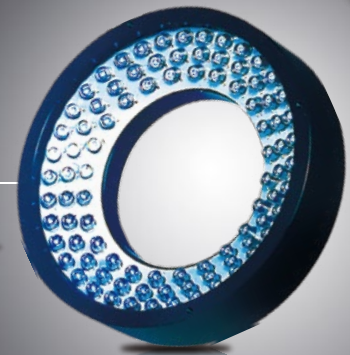
  

Model	Lens filter diameter
IM-Y48-M255	M25.5×P0.5
IM-Y48-M270	M27.0×P0.5
IM-Y48-M305	M30.5×P0.5

# Ultraviolet Light UV-CAN series

Possible to inspect clearly than visible lighting. The AUV series is twice higher output than previous model.

DC 24V Models Available



•405nm lighting are also available of the same shape as the visible light

Model	Light Color	Power Consumption (W)	Input Voltage	SAG (*)	Wavelength (nm)	Power Supply	Drawing
IDR-50/28UV-405NR	UV	2.9	DC12V	6A	405	ILP-30M2 (P.69) IDGB series (P.67) other, overdrive power supply, etc.	1
IDR-LA74/48UV-405NR	UV	5.4		6E			2
IDBA-C50/15UV-405NR	UV	2.9		61			3
IFV-C40UV-405NR	UV	4.1		62			4
IDR-50/28AUV-365	UV	1.5		95	365		5
IDR-110/60AUV-365	UV	7.2		98	365		6
IDBA-C50/50AUV-365	UV	2.9		96	365		7
IDR-50/28AUV-375	UV	1.5		95	375		5
IDR-110/60AUV-375	UV	7.2	98	375	6		
IDBA-C50/15AUV-375	UV	1	95	375	8		

\*Contact IMAC if you require a lighting shape other than those described here. \*Input voltage is DC 12V, but DC 24V models are also available. \*The SAG value indicates the maximum voltage setting for SAG power supplies. For details, see page 75.

**Example of photographed objects** Effect: UV lighting is suited for excitation and fine scratches inspection of the particles.

