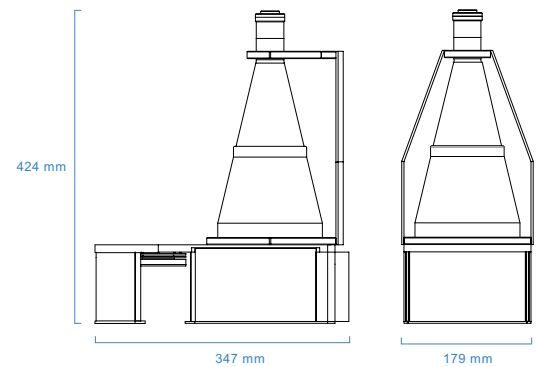
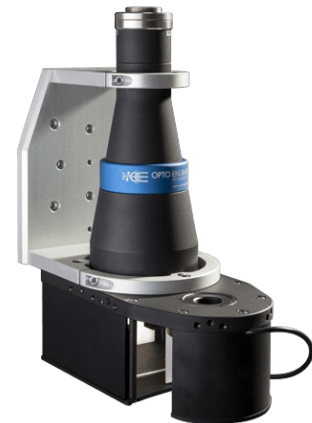


TCCAGE23096

Bi-telecentric multi-mirror system for 2/3" detectors

SPECIFICATIONS

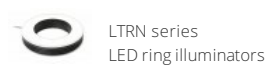
Detector type		2/3"
Max. object diameter	(mm)	16
Max. object height	(mm)	68
Optical specifications		
Wavelength range	(nm)	450 .. 650
CTF @ 70 lp/mm	(%)	> 40
wF/# 1		8
Mechanical specifications		
Width	(mm)	179
Length	(mm)	347
Height	(mm)	424
Mass	(g)	9154
Mount		C
Electrical specifications		
Ring illumination voltage	(V, DC)	24
Ring illumination power	(W)	3
Coaxial illumination voltage	(V, DC)	24
Coaxial illumination power	(W)	15
Cable		CB244P1500 included



NOTES

1. F/# = F-number, wF/# = working F-number, the real F-number of a lens when used as a macro.

COMPATIBLE PRODUCTS



LTRN075R45	Ring LED illuminator, inner diameter 28 mm, oblique type, red 630 nm
LTRN075G45	Ring LED illuminator, inner diameter 28 mm, oblique type, green 525 nm
LTRN075B45	Ring LED illuminator, inner diameter 28 mm, oblique type, blue 470 nm
LTRN075W45	Ring LED illuminator, inner diameter 28 mm, oblique type, white

Electronics and cables
Power supplies, power and interface cables

CB244P1501	Power cable, side 1 M8 connector straight, side 2 cable end - 2 m - type 2 labels
CB244P1501L	Power cable, side 1 M8 connector angled, side 2 cable end - 2 m - type 2 labels
PS1CH24V	Power supply 1 channel 24 V
PS1CH24VDIN	Power supply 1 channel 24 V DIN guide
PS2CH24V	Power supply 2 channel 24 V

Optical accessories
Replacement optics and mirrors

CSCAGE096	Sample for alignment of TCCAGExx096
SPMI003	First surface mirror, active area 25x75 mm, mount type 1
SPPS002	Right angle prism, legs 33.3 mm, H 72 mm, mirror coating

CONNECTION

