

# Line Scan Lenses for 35mm Sensor

## ML-L Series

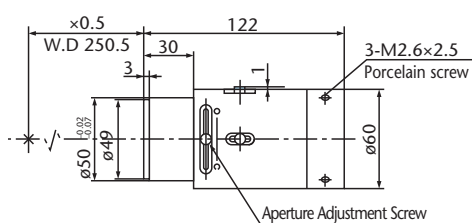
< 35 mm  
7 μm

Optimal for high speed processing of large field of views, the ML-L Series was designed for line scan and area sensors up to 35 mm length and 7 μm pixel size.

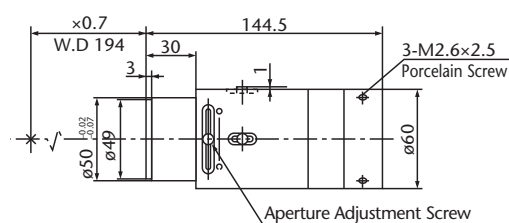
- Low optical distortion, all models less than 0.1%
- Low marginal rays difference
- High resolution, high contrast
- Suitable for long working distance applications



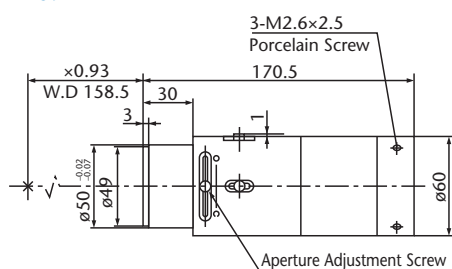
### ML-L05



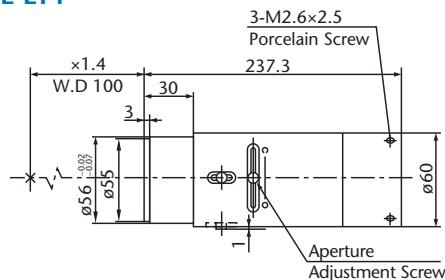
### ML-L07



### ML-L09



### ML-L14

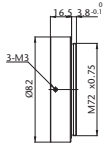


Model	Focal Length	Magnification	O/I	WD	Effective F No	TV Distortion	Image Format	Mount	Weight
ML-L05	102.1	×0.5	433mm	250.5mm	5.9 ~ 28	-0.02% or less	35mm	MountAdapter MT	700g
ML-L07	103.2	×0.7	399mm	194mm	6.7 ~ 32	-0.02% or less	35mm	MountAdapter MT	800g
ML-L09	104.6	×0.93	389.5mm	158.5mm	7.7 ~ 37	0.01% or less	35mm	MountAdapter MT	800g
ML-L14	103.3	×1.4	397.8mm	100mm	9.5 ~ 45	0.01% or less	35mm	MountAdapter MT	800g

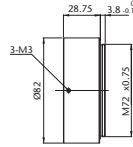
### Camera Adapters (Optional)

#### For ML-F90C/F80C

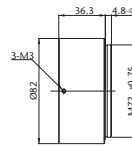
CA-V74M72-31.8



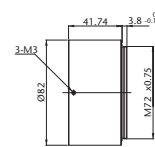
CA-V74M72-19.55



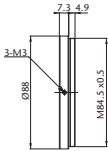
CA-V74M72-12.0



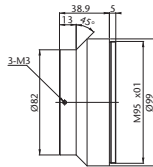
CA-V74M72-6.56



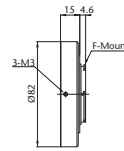
CA-V74M84.5-41



CA-V74M95-9.4



CA-M74FMT

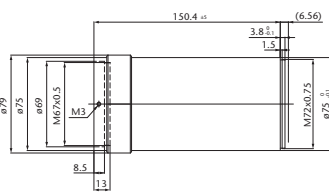


Model	★CA-V74M72-31.8	★CA-V74M72-19.55	★CA-V74M72-12.0	★CA-V74M72-6.56	★CA-V74M84.5-41	★CA-V74M95-9.4	★CA-V74FMT
Camera Mount	M72	M72	M72	M72	M84.5	M95	F
Flange back (mm)	31.8	19.55	12	6.56	41	9.4	46.5

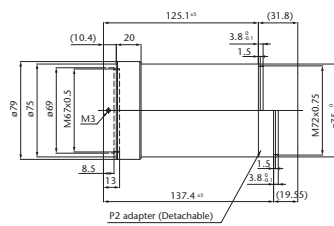
★Made-to-order

#### For ML-L12K5A

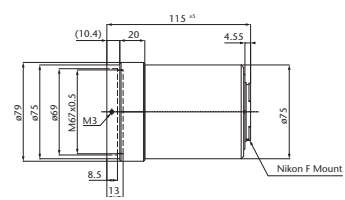
12K5-M72-6.56



12K5-M72-31.8/19.55



12K5-FMT

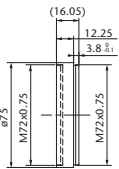


Model	★ 12K5-M72-6.56	★ 12K5-M72-31.8/19.55	★ 12K5-FMT
Camera Mount	M72	M72	F
Flange back (mm)	6.56	19.55	46.5

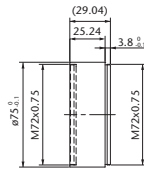
★Made-to-order

**For ML-L00502**

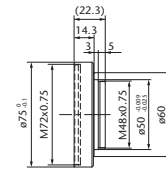
**L00502-M72-19.55**



**L00502-M72-6.56**



**L00502-TFL2**

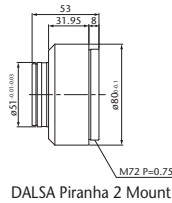


Model	★ L00502-M72-19.55	★ L00502-M72-6.56	★ L00502-TFL2
Camera Mount	M72	M72	TFL
Flange back (mm)	19.55	6.56	17.5

★Made-to-order

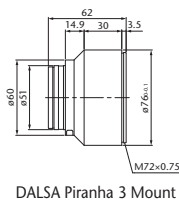
**For ML-L02035/03505**

**P2MT-S**



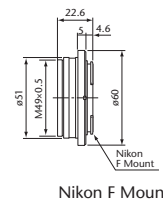
DALSA Piranha 2 Mount

**P3MT-S**



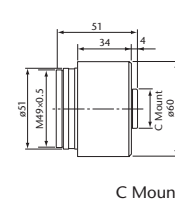
DALSA Piranha 3 Mount

**FMT-S**



Nikon F Mount

**CMT-S**



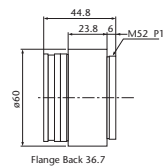
C Mount

Model	★ P2MT-S	★ P3MT-S	★ FMT-S	★ CMT-S
Camera Mount	M72	M72	F	C
Flange back (mm)	19.55	6.56	46.5	17.526

★Made-to-order

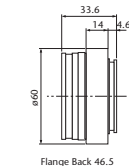
**For ML-L Series**

**MMT**



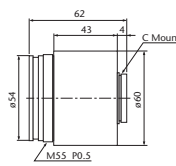
NED Compatible Mount

**FMT**



Nikon Mount

**CMT**



C Mount

Model	★ MMT	★ FMT	★ CMT
Camera Mount	M52	F	C
Flange back (mm)	36.7	46.5	17.526

★Made-to-order