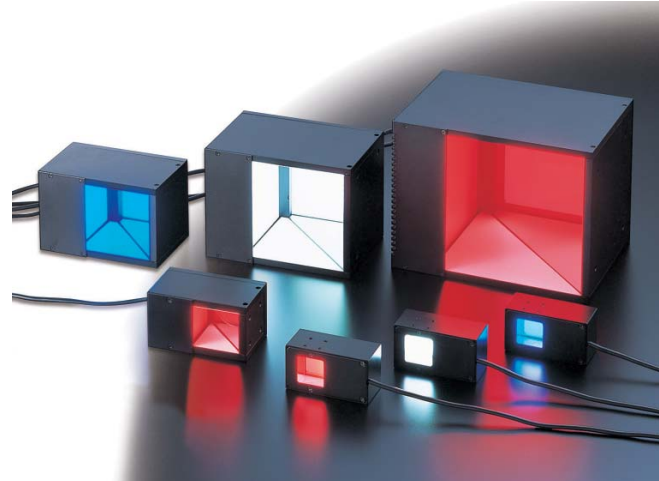


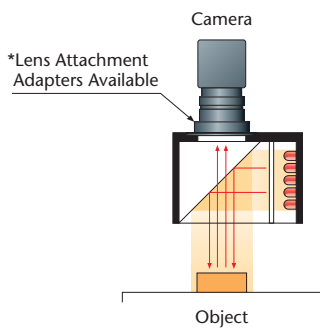
Simulated Coaxial Illumination MSCL Series



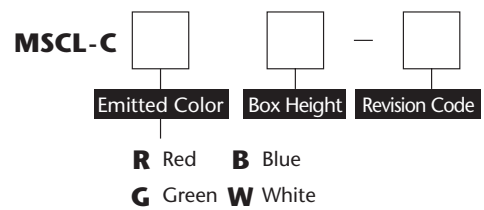
- Highly uniform pseudo-coaxial (on-axis) lighting
- Designed for use with our telecentric MML Series and other lenses without built-in coaxial illumination



Illumination Structure



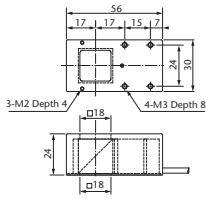
Explanation of Model Code



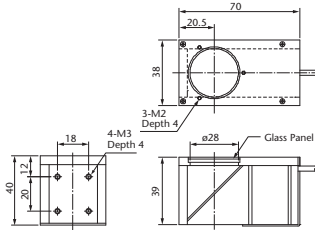
Model	Emitted Color	Maximum Rated Current IFM(A)	Box Height (mm)	Window Size (mm)	Optical Path Length Extension (mm)	Weight (g)	LED Controller
MSCL-CR24	● Red	0.09	24	18 × 18	6.8	110	MLEK-A080
★ MSCL-CG24	● Green	0.20	24	18 × 18			MLEK-A080
MSCL-CB24	● Blue	0.20	24	18 × 18			MLEK-A080
MSCL-CW24	○ White	0.20	24	18 × 18			MLEK-A080
MSCL-CR39	● Red	0.16	39	∅28	1.2	160	MLEK-A080
★ MSCL-CG39	● Green	0.31	39	∅28			MLEK-A080
MSCL-CB39	● Blue	0.31	39	∅28			MLEK-A080
MSCL-CW39	○ White	0.31	39	∅28			MLEK-A080
MSCL-CR56-B	● Red	0.33	56	∅28	1.2	320	MLEK-A080
★ MSCL-CG56-B	● Green	0.66	56	∅28			MLEK-A080
MSCL-CB56-B	● Blue	0.66	56	∅28			MLEK-A080
MSCL-CW56-B	○ White	0.66	56	∅28			MLEK-A080
MSCL-CR74-B	● Red	0.62	74	50 × 50	1.2	520	MLEK-A080
★ MSCL-CG74-B	● Green	1.11	74	50 × 50			MLEK-A230
MSCL-CB74-B	● Blue	1.11	74	50 × 50			MLEK-A230
MSCL-CW74-B	○ White	1.11	74	50 × 50			MLEK-A230
MSCL-CR105-B	● Red	2.14	105	77 × 77	1.2	920	MLEK-A230
★ MSCL-CG105-B	● Green	2.07	105	77 × 77			MLEK-A230
MSCL-CB105-B	● Blue	2.07	105	77 × 77			MLEK-A230
MSCL-CW105-B	○ White	2.07	105	77 × 77			MLEK-A230

* LED Controller on P.152~156
 * In case of a plurality of LED illuminations used, please check the "Selection Criteria LED Controller" on P.99.
 * MLM Series products (Light control film) on P.158 can be attached to MSCL-C **-B products. Made-to-order products
 * MSCL-CX105 comes with an air-cooling fan
 ★Made-to-order products.

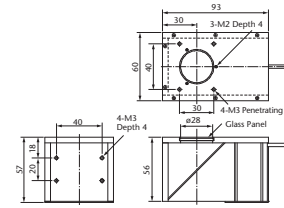
MSCL-CR (CG,CB,CW) 24



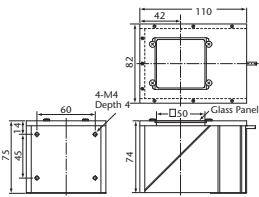
MSCL-CR (CG,CB,CW) 39



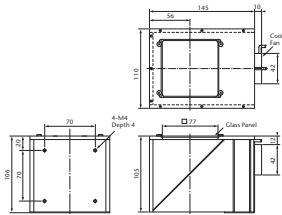
MSCL-CR (CG,CB,CW) 56-B



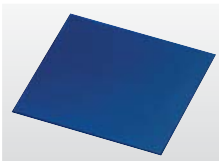
MSCL-CR (CG,CB,CW) 74-B



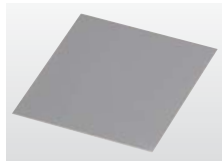
MSCL-CR (CG,CB,CW) 105-B



Accessories



Polarizer
(P.158)



Light Control Film
(P.158)

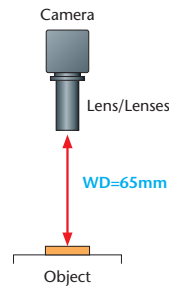


Lens Attachment Adapter
(P.159)

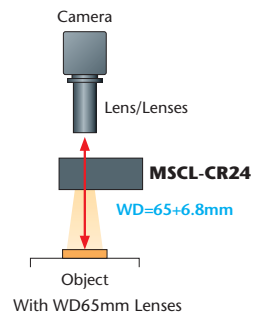
About Installation

Because glass components are used in the MSCL units, the internal optical path length will change when used. Be aware of the extended optical path when installing in a vision system.

Without MSCL-CR24



With MSCL-CR24



Sample Images

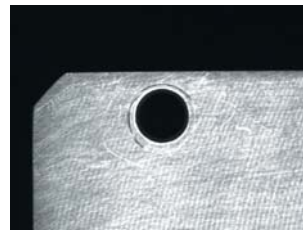
MSCL



Dry Cell



CD (Scratch)



Metal Parts

Light Distribution Characteristics

MSCL-CW56-B

