

UV Illumination UV Series

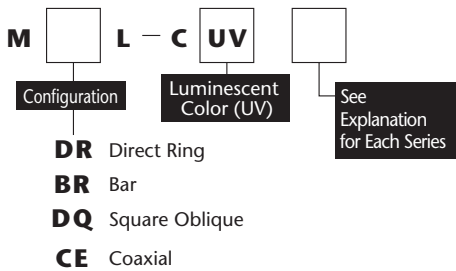


- Provides image recognition at high contrast levels especially for images that are difficult to recognize with visible light
- Can be used for fluorescence applications
- Use with a UV light range camera
- Effective in detection of dirt on glass substrates and dust on elements
- The peak wavelength is 365 nm for most models (MCELCUV8-405 and MBRL-CUV7530-405 are 405 nm)



*Image of illumination condition

Explanation of Model Code



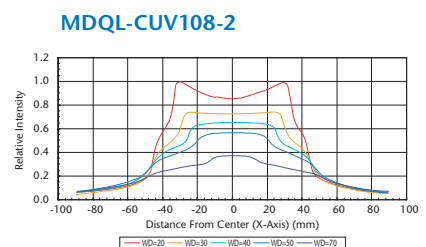
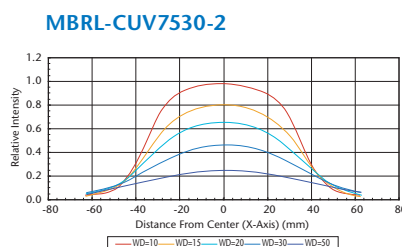
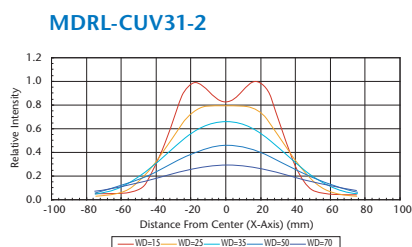
Model	Emitted Color	Maximum Rated Current IFM(A)	Dimensions (mm)		Weight (g)	LED Controller
			Internal Diameter	External Diameter		
MDRL-CUV31-2	● UV	0.36	Internal Diameter Ø31	External Diameter Ø66	130	MLEK-A080
MBRL-CUV7530-2	● UV	0.36	Lighting Area 75×30		120	MLEK-A080
★ MBRL-CUV7530-405	● UV	0.52	Lighting Area 75×30		120	MLEK-A080
★ MDQL-CUV108-2	● UV	0.36	Internal Dimensions □60	External Dimensions □108	210	MLEK-A080
★ MCEL-CUV8-405	● UV	0.03	Tip External Diameter Ø8		35	MLEK-A080

* LED Controller on P.152-156

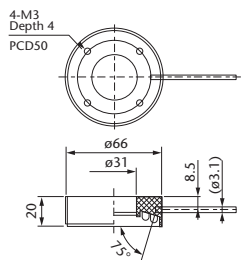
* In case of a plurality of LED illuminations used, please check the "Selection Criteria LED Controller" on P.99.

★ Made-to-order products.

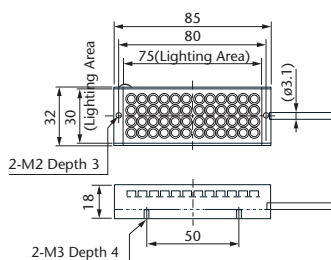
Light Distribution Characteristics



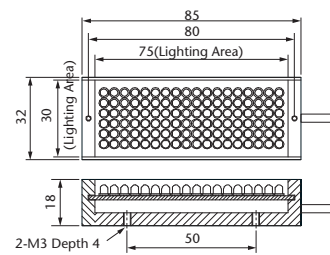
MDRL-CUV31-2



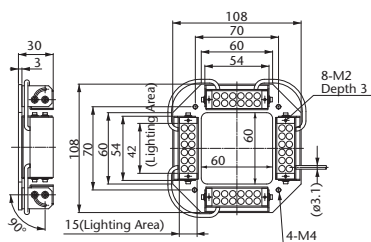
MBRL-CUV7530-2



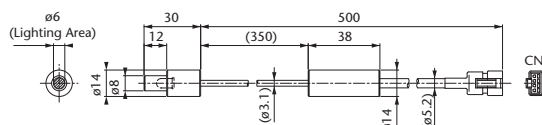
MBRL-CUV7530-405



MDQL-CUV108-2

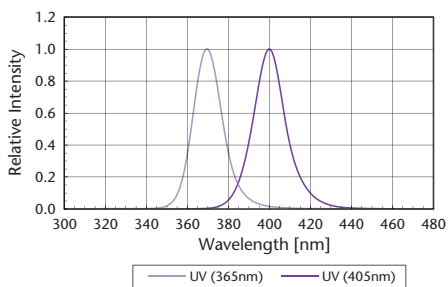


MCEL-CUV8-405



LED Spectral Characteristics

UV Series



Sample Images

Yogurt Package



Color camera with White LED



Visible, B/W camera with White LED



IR-camera with IR LED



UV-camera with UV LED

The print pattern not visible under IR can be seen clearly under UV