

# MV-CA004-10GM/GC

0.4 MP 1/2.9" CMOS GigE Area Scan Camera



GEN*i*CAM

GIG*E* VISION

## Introduction

MV-CA004-10GM/GC adopts Sony® IMX 287 CMOS sensor and provides high quality image. The GigE interface provides high-speed real-time transmission of uncompressed data with the maximum frame rate reaching 312.9 fps at full resolution.

## Key Feature

- Adopts GigE interface and max. transmission distance of 100 meters without relay.
- Supports auto and manual adjustment for gain, exposure control, white balance, LUT, Gamma correction, etc.
- Up to 128 MB local memory for burst transmission and retransmission.
- Compatible with GigE Vision Protocol V1.2, GenICam standard and third-party software meeting with GigE Vision Protocol.

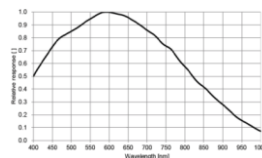
## Available Model

- Mono camera: MV-CA004-10GM
- Color camera: MV-CA004-10GC

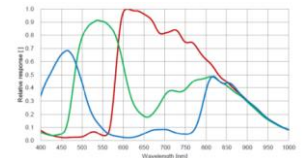
## Applicable Industry

Electronic semiconductor, factory automation, quality inspection, etc.

## Sensor Quantum Efficiency

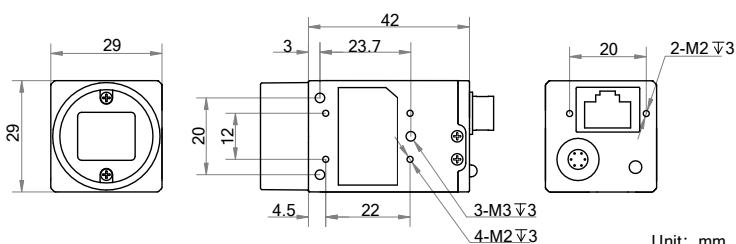


MV-CA004-10GM



MV-CA004-10GC

## Dimension



## Specification

Model	MV-CA004-10GM	MV-CA004-10GC
<b>Camera</b>		
<b>Sensor type</b>	CMOS, global shutter	
<b>Sensor model</b>	Sony® IMX287	
<b>Pixel size</b>	6.9 μm × 6.9 μm	
<b>Sensor size</b>	1/2.9"	
<b>Resolution</b>	720 × 540	
<b>Max. frame rate</b>	312.9 fps @ 720 × 540	
<b>Dynamic range</b>	74 dB	
<b>SNR</b>	41 dB	
<b>Gain</b>	0 dB to 20 dB	
<b>Exposure time</b>	1 μs to 10 sec	
<b>Exposure mode</b>	Off/ Once/ Continuous exposure mode	
<b>Mono/color</b>	Mono	Color
<b>Pixel format</b>	Mono 8/10/10p/12/12p	Mono 8/10/12, Bayer GR 8/10/10p/12/12p YUV 422 Packed, YUV422_YUYV_Packed, RGB 8
<b>Binning</b>	Not support	
<b>Decimation</b>	Not support	
<b>Reverse image</b>	Supports horizontal and vertical reverse image	
<b>Image buffer</b>	128 MB	
<b>Electrical feature</b>		
<b>Data interface</b>	Gigabit Ethernet, compatible with Fast Ethernet	
<b>Digital I/O</b>	6-pin Hirose connector provides power and I/O, including opto-isolated input × 1 (Line 0), opto-isolated output × 1 (Line 1), bi-directional non-isolated I/O × 1 (Line 2).	
<b>Power supply</b>	9 VDC to 24 VDC, supports PoE	
<b>Power consumption</b>	Typ. 3.1 W @ 12 VDC	
<b>Mechanical</b>		
<b>Lens mount</b>	C-mount	
<b>Dimension</b>	29 mm × 29 mm × 42 mm (1.1" × 1.1" × 1.7")	
<b>Weight</b>	Approx. 68 g (0.15 lb.)	
<b>Ingress Protection</b>	IP30 (under proper lens installation and wiring)	
<b>Temperature</b>	Working temperature: 0 °C to 50 °C (32 °F to 122 °F) Storage temperature: -30 °C to 70 °C (-22 °F to 158 °F)	
<b>Humidity</b>	20% RH to 80% RH (no condensation)	
<b>General</b>		
<b>Client software</b>	MVS or third-party software meeting with GigE Vision Protocol	
<b>Operating system</b>	32/64-bit Windows 7/10, 32/64-bit Linux	
<b>Compatibility</b>	GigE Vision V1.2, GenICam	
<b>Certification</b>	CE, FCC, RoHS, KC	