

MV-CA032-10GM/GC

3.2 MP 1/1.8" CMOS GigE Area Scan Camera



GEN*i*CAM

GigE
VISION

Introduction

MV-CA032-10GM/GC camera adopts Sony IMX265 sensor to provide high-quality image. It uses GigE interface to transmit non-compressed images in real time with max. frame rate reaching 37.5 fps.

Key Feature

- Adopts GigE interface and max. transmission distance of 100 meters without relay.
- Supports auto and manual adjustment for exposure control, LUT, Gamma correction, etc.
- Up to 128 MB local memory for burst transmission and retransmission.
- Supports hardware trigger, software trigger, etc.
- Compatible with GigE Vision Protocol V2.0, GenICam Standard, and third-party software based on these protocol and standard.

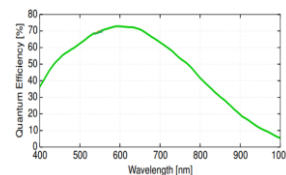
Available Model

- Mono camera: MV-CA032-10GM
- Color camera: MV-CA032-10GC

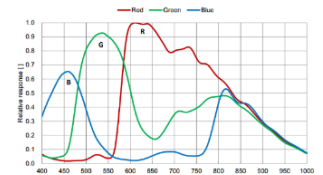
Applicable Industry

Electronic semiconductor, factory automation, food and beverage, medical packaging, etc.

Sensor Quantum Efficiency

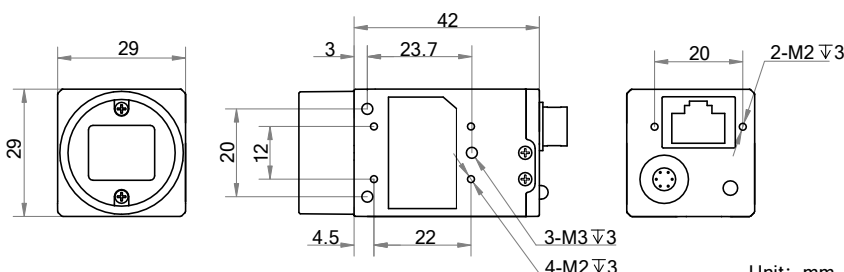


MV-CA032-10GM



MV-CA032-10GC

Dimension



Specification

Model	MV-CA032-10GM	MV-CA032-10GC
Camera		
Sensor type	CMOS, global shutter	
Sensor model	Sony IMX265	
Pixel size	3.45 μm x 3.45 μm	
Sensor size	1/1.8"	
Resolution	2048 x 1536	
Max. frame rate	37.5 fps @ 2048 x 1536	
Dynamic range	73 dB	
SNR	40 dB	
Gain	0 dB to 20 dB	
Exposure time	UltraShort exposure mode: 1 μs to 14 μs	
	Standard exposure mode: 15 μs to 10 sec	
Exposure mode	Off/Once/Continuous exposure mode	
Mono/color	Mono	Color
Pixel format	Mono 8/10/10p/12/12p	Mono 8/10/12, Bayer RG 8/10/10p/12/12p, YUV422Packed, YUV422_YUYV_Packed, RGB 8, BGR 8
Binning	Supports 1 x 1, 1 x 2, 2 x 1, 1 x 4, 4 x 1, 2 x 2, 2 x 4, 4 x 2, 4 x 4	
Decimation	Supports 1 x 1, 1 x 2, 2 x 1, 2 x 2	
Reverse image	Supports horizontal and vertical reverse image output	
Image buffer	128 MB	
Electrical feature		
Data interface	Gigabit Ethernet, compatible with Fast Ethernet	
Digital I/O	6-pin Hirose connector provides power and I/O, including opto-isolated input x 1 (Line0), opto-isolated output x 1 (Line1), and bi-directional non-isolated I/O x 1 (Line2)	
Power supply	12 VDC, supports PoE	
Power consumption	Typ. 3.2 W @ 12 VDC	Typ. 3.5 W @ 12 VDC
Mechanical		
Lens mount	C-mount	
Dimension	29 mm x 29 mm x 42 mm (1.1" x 1.1" x 1.7")	
Weight	Approx. 68 g (0.15 lb.)	
Ingress protection	IP30 (under proper lens installation and wiring)	
Temperature	Working temperature: 0 °C to 50 °C (32 °F to 122 °F)	
	Storage temperature: -30 °C to 70 °C (-22 °F to 158 °F)	
Humidity	20% RH to 80% RH (no condensation)	
General		
Client software	MVS or third-party software meeting with GigE Vision Protocol	
Operating system	32/64-bit Windows 7/10, 32/64-bit Linux	
Compatibility	GigE Vision V2.0, GenICam	
Certification	CE, FCC, RoHS, KC	