

# MV-CH650-90YM/YC

## 65 MP CMOS CoaXPress Area Scan Camera



GEN*i*CAM

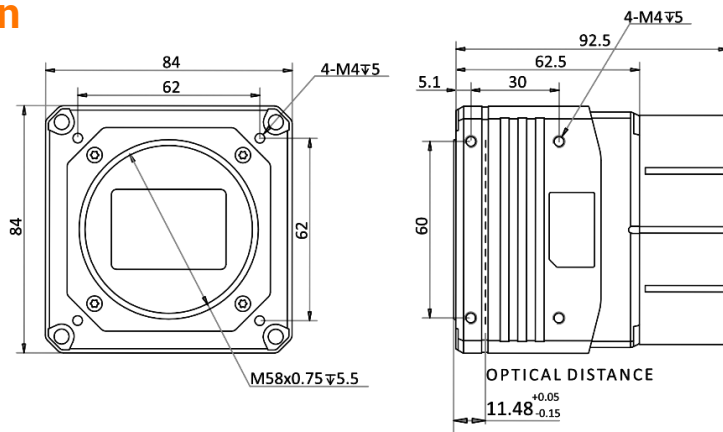
### Introduction

MV-CH650-90YM/YC camera adopts Gpixel GMAX3265 sensor to provide high-quality image. It uses CXP-12 interface to transmit non-compressed images in real time, and its max. frame rate can reach 71 fps in full resolution.

### Key Feature

- Adopts global shutter CMOS to provide high dynamic range, SNR, and high-quality images.
- Adopts CXP-12 interface to transmit data.
- Adopts the low consumption fanless mode to ensure stability during continuous high-speed imaging.
- Compatible with CoaXPress Protocol, GenICam Standard.

### Dimension



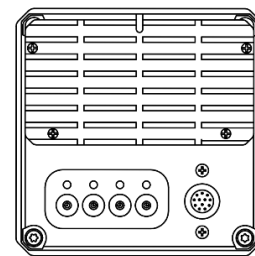
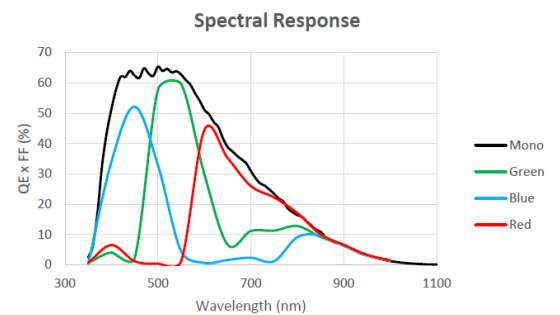
### Available Model

- Mono camera: MV-CH650-90YM-M58S-NN
- Color camera: MV-CH650-90YC-M58S-NN

### Applicable Industry

PCB AOI, FPD, 3D, Motion Capture, etc.

### Sensor Quantum Efficiency



Unit: mm

Model	MV-CH650-90YM	MV-CH650-90YC
<b>Camera</b>		
Sensor type	CMOS, global shutter	
Sensor model	Gpixel GMAX3265	
Pixel size	3.2 $\mu\text{m}$ $\times$ 3.2 $\mu\text{m}$	
Sensor size	29.9 mm $\times$ 22.4 mm	
Resolution	9344 $\times$ 7000	
Max. frame rate	71 fps @ 9344 $\times$ 7000	
Dynamic range	66 dB	
SNR	40 dB	
Gain	1.25x	
Exposure time	12 $\mu\text{s}$ to 10 sec	
Exposure mode	Off/Once/Continuous exposure mode	
Mono/color	Mono	Color
Pixel format	Mono 8/10/12	Bayer BG 8/10/12
Binning	Supports 1 $\times$ 1, 2 $\times$ 2, 4 $\times$ 4	
Decimation	Supports 1 $\times$ 1, 2 $\times$ 2, 4 $\times$ 4	
Reverse image	Supports horizontal and vertical reverse image output	
<b>Electrical features</b>		
Data interface	CoaXPress with Micro-BNC interface	
Digital I/O	12-pin P10 connector provides power and I/O, including opto-isolated input $\times$ 1 (Line 0), opto-isolated output $\times$ 1 (Line 1), bi-directional non-isolated I/O $\times$ 1 (Line 2), and RS-232 $\times$ 1.	
Power supply	24 VDC, CXP-0 and CXP-1 connectors support PoCXP	
Power consumption	Typ. 13.0 W @ 24 VDC	Typ. 13.2 W @ 24 VDC
<b>Mechanical</b>		
Lens mount	M58*0.75, flange back length 11.48 mm	
Dimension	84 mm $\times$ 84 mm $\times$ 62.5 mm (3.3" $\times$ 3.3" $\times$ 2.5")	
Weight	Approx. 650 g (1.4 lb.)	
Ingress protection	IP40 (under proper lens installation and wiring)	
Temperature	Working temperature: 0 $^{\circ}\text{C}$ to 50 $^{\circ}\text{C}$ (32 $^{\circ}\text{F}$ to 122 $^{\circ}\text{F}$ ) Storage temperature: -30 $^{\circ}\text{C}$ to 80 $^{\circ}\text{C}$ (-22 $^{\circ}\text{F}$ to 176 $^{\circ}\text{F}$ )	
Humidity	20% RH to 95% RH (no condensation)	
<b>General</b>		
Client software	MVS or frame grabber software meeting with CoaXPress Protocol	
Operating system	32/64-bit Windows 7/10, 64-bit Windows 11 with 8 GB memory or above	
Compatibility	CoaXPress, GenICam	
Certification	CE, RoHS, KC	