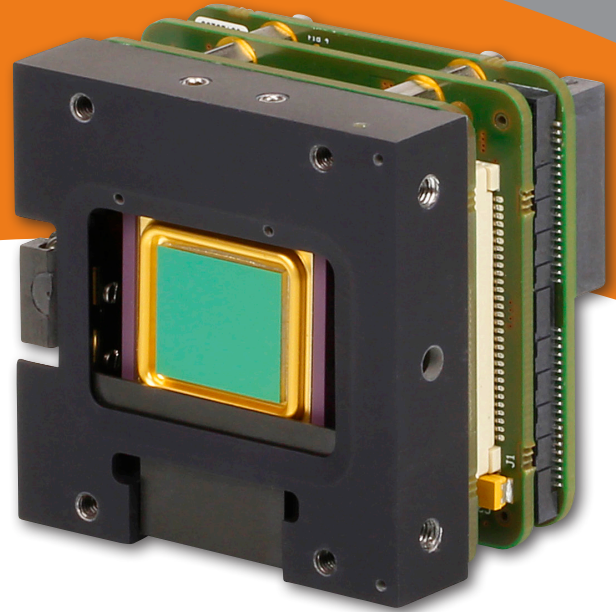


XTM+ 640 SERIES

Thermal LWIR Camera Module

- LWIR uncooled module with 640 x 480 resolution
- Microbolometer detector



SMALL, HIGH PERFORMANCE UNCOOLED THERMAL MODULE

The XTM+ 640 Series is based on an uncooled microbolometer detector with a 640 x 480 pixel resolution.

The XTM+ 640 offers frame rates up to 60 Hz and lower detector NETD options (< 30 mK available upon request).

The modules come with either a CameraLink, GigE Vision or QTE Samtec interface and feature low weight and power.

DESIGNED FOR USE IN

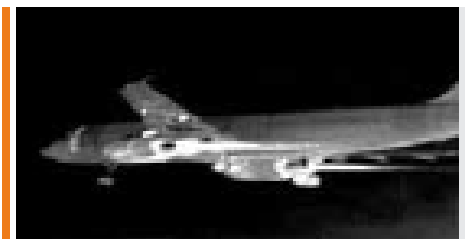
- Safety & Security
- Transportation

ADVANTAGES

- Compact size
- Easy connectivity via multiple interfaces
- Frame rates up to 60 Hz
- Lower detector NETD options (<30 mK available upon request)



Thermal security



Vision enhancement



Border security

SPECIFICATIONS

Camera Specifications	XTM+ 640 CL XTM+ 640 CL 9Hz	XTM+ 640 GigE XTM+ 640 GigE 9Hz	XTM+ 640 16bit DV XTM+ 640 16bit DV 9Hz
Mechanical specifications			
Camera dimensions (width x height x length) [mm] (approx.)	45 x 45 x 45	45 x 45 x 63	45 x 45 x 36
Optical interface	M42 or M34 x 0.75		
Camera weight [gr]	84	125	72
Connector GigE	-	RJ-45	-
Connector CameraLink	Standard SDR	-	-
Connector power	Hirose HR10-7R-SA[73]	Hirose HR10-7R-SA[73]	-
Connector trigger	SMA	SMA	-
Connector analog	-	-	-
Connector RS232	-	-	-
Connector general I/O	-	-	QTE-020-02-L-D-A-Samtec
Environmental & power specifications			
Ambient operating temperature range [°C]	From -40 to +60		
Storage temperature [°C]	From -45 to +85		
Power consumption [W]	2.9	4.6	2.7
Power supply voltage	DC 12 V	DC 12 V or PoE (Power over Ethernet)	DC 3.3 V
Shock	40 g, 11 ms, MIL-STD810G/MIL-STD883		
Vibration	5 g [20 - 2000 Hz], MIL-STD810G/MIL-STD883		
Regulatory compliance	RoHS		
Electro-optical specifications			
Image format [pixels]	640 x 480		
Pixel pitch [µm]	17		
Detector type	a-Si microbolometer		
Integration type	Rolling shutter		
Active area and diagonal [mm]	10.88 x 8.16 [13.6 diagonal]		
Detector NETD [Noise Equivalent Temperature Difference] [mK]	<50 [at 30 Hz, 300 K, F/1] [<30 mK available upon request]		
Spectral range [µm]	8 - 14		
Pixel operability	>99.5%		
Max frame rate [Hz] [full frame]	60 [or 9]	60 [or 9]	60 [or 9]
Integration time range [µs]	1 - 80		
Region of interest	Yes		
Min region size [pixels]	160 x 120		
Analog-to-Digital [ADC] [bits]	16		
Command and control	CameraLink	GigE Vision	QTE Samtec [serial LVCMOS]
Digital output format	16 bit base CameraLink	16 bit GigE Vision	16 bit Digital Video
Trigger	In or out via SMA or CL-CC1 [configurable] [not for 9 Hz]	In or out via SMA [configurable] [not for 9 Hz]	In or out via QTE Samtec [configurable] [not for 9 Hz]
Product selector guide			
Part number	XEN-000638	XEN-000637	XEN-000635
	XEN-000643 [9 Hz]	XEN-000642 [9 Hz]	XEN-000640 [9 Hz]

XDS.019.05 | Information furnished by Xenics is believed to be reliable. However, no responsibility is assumed for possible inaccuracies or omissions. Specifications are typical values and subject to change without notice. This information supersedes all previously supplied information.



For more information on our products
Please scan the QR code.

www.xenics.com | www.sinfrared.com