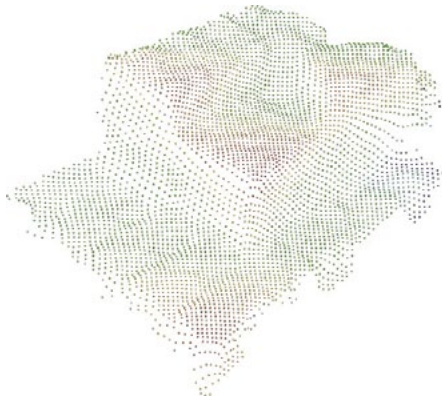


ARGOS^{3D} - PULSE

VGA Resolution



Argos^{3D} - Pulse point cloud for e.g. goods inspection

Accuracy will play an essential role in the future.

The Argos^{3D} - Pulse is a new depth sensor, operating on the Time-of-Flight (ToF) principle and a VGA resolution for better accuracy.

The versatile sensor delivers best-in-class noise performance and accurate 3D depth maps.

The small form factor and flush mount option in combination with 3D ToF technology makes Argos^{3D} - Pulse a perfect choice for various 3D applications, where high accuracy is required.

APPLICATIONS

- Bin Picking / Conveyor Belt
- Palletizing
- Agriculture
- Freight Measurement
- Livestock
- Patient Positioning
- Industrial Automation



becom-group

ARGOS^{3D} - PULSE

VGA Resolution

SPECIFICATIONS

Sensor Type	VGA 3D Depth Sensor
Dimensions	173 x 65 x 46 mm
Temperature	-20 to 45 °C
Application Range	up to 5 m*
FoV	60° or 80°
Resolution 3D	640 x 480 px ToF
FPS	up to 40 fps*
Illumination	850 nm / 940 nm
Protection Class	IP67

*depending on scenario

OPERATING SYSTEMS

Linux, ROS, Windows

FRAMEWORKS

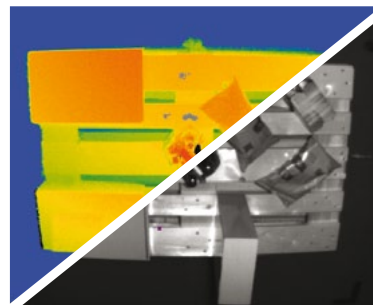
LabVIEW, MATLAB, MetriCam, Halcon

INTERFACES

Gbit/s-Ethernet , Trigger In

GPIO

Power



Depth Data

Grey Value

SCOPE OF SUPPLY

CAMERA

PON: 150-3088-1

Argos3D - Pulse-60

ACCESSORIES

Argos3D - Pulse Mounting Kit

ETH Cable

Power Supply

Power + IO Cable

SW / Support Online Link

