

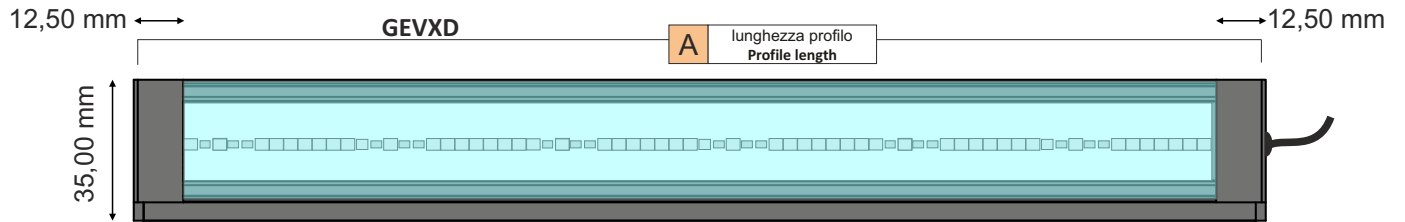
Multispectral GEVXD 12 programmable wavelengths

Multispectral GEVXD Configuration examples Continuous use - passive cooling		Profile Length	Boards N.	Wavelength config.	Standard current supply at 24V=	Power consumption	Power Led total N.	type of use	Price
	GEVXD28-MS-400-1650	28 cm	1	400-1650 nm (table 1)	2,0 A Max	50 W Max	12 x 6	Visible +Nir+Swir	2800,00 €
	GEVXD28-MS-365-980	28 cm	1	365-980 nm (table 2)	1,5 A Max	35 W Max	12 x 6	UVA+Visible +Nir	2600,00 €
	GEVXD28-MS-RGB-1550	28 cm	1	450-1550 nm (table 3)	2,0 A Max	50 W Max	12 x 6	Visible +Nir+Swir	2800,00 €
	GEVXD108-MS-400-1650	108 cm	4	400-1650 nm (table 1)	8,0 A Max	200 W Max	12 x 24	Visible +Nir+Swir	8400,00 €
	GEVXD55-MS-365-980	55 cm	2	365-980 nm (table 2)	3,0 A Max	70 W Max	12 x 12	UVA+Visible +Nir	4400,00 €
	GEVXD161-MS-365-980	161 cm	6	365-980 nm (table 2)	12,0 A Max	280 W Max	12 x 36	UVA+Visible +Nir	11700,00 €
	GEVXD214-MS-400-1650	214 cm	8	400-1650 nm (table 1)	16,0 A Max	380 W Max	12 x 48	Visible +Nir+Swir	16500,00 €

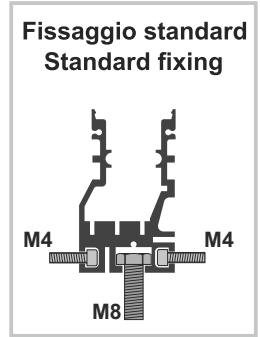
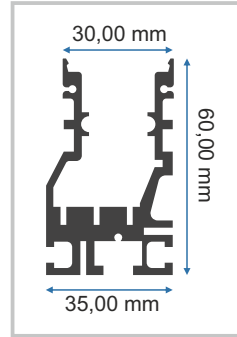
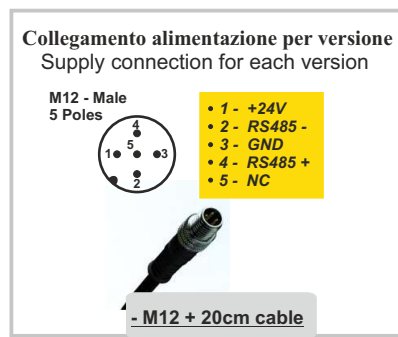
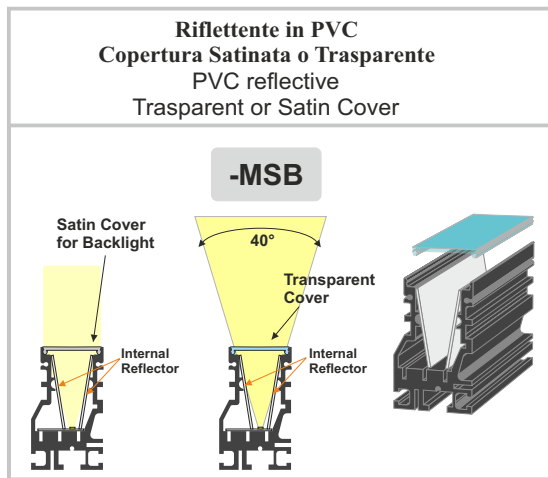
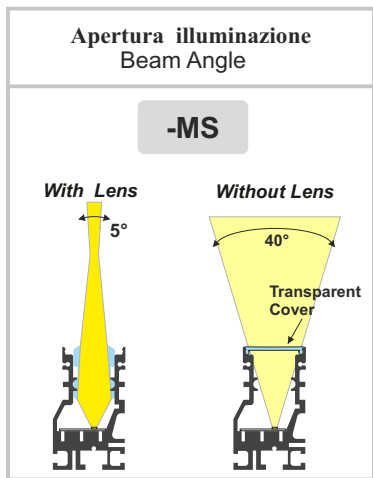
Si garantisce il grado IP segnalato se il prodotto viene montato rivolto verso il basso

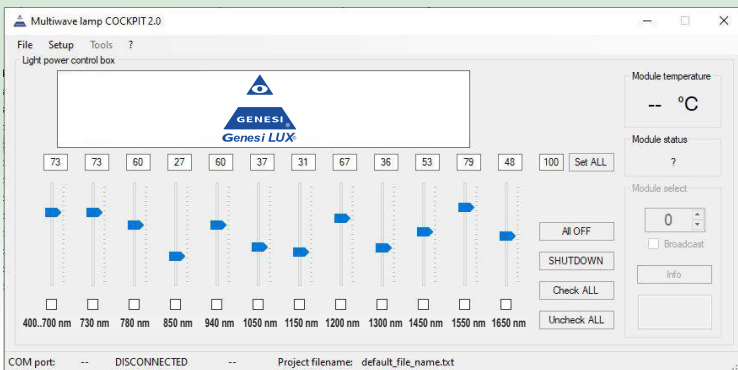
The indicated IP protection degree is guaranteed only if the product is positioned downward





Su richiesta disegni meccanici 3D
3D mechanical drawings on request





Application

- Useful in all the prototype machineries where it is necessary to understand which is the most suitable lighting for a particular object, with a single illuminator;
- Useful in all the production machineries that analyze of different products on a single line, since with a single illuminator it is possible to have up to 12 different wavelengths;
- Useful in analysis laboratories where it is necessary to highlight material samples using particular wavelengths;

Description

Useful for vision systems with linear cameras (using 5° polycarbonate lens); Useful for vision systems with matrix cameras (using 5° polycarbonate lens or without it, to have a 40° beam angle);
 Single wavelength ignition from 0 to 100% or simultaneous ignition of all 12 wavelengths;
 GEVXD28 (basic model) dimensions: 280X60X35 mm;
 Modular model: up to 8 boards on the same bar (up to 214 cm);
 - Including USB/485 Converter and pc software

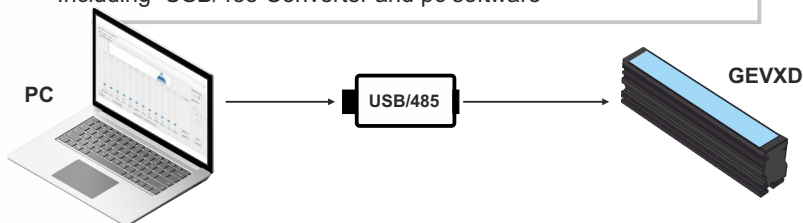
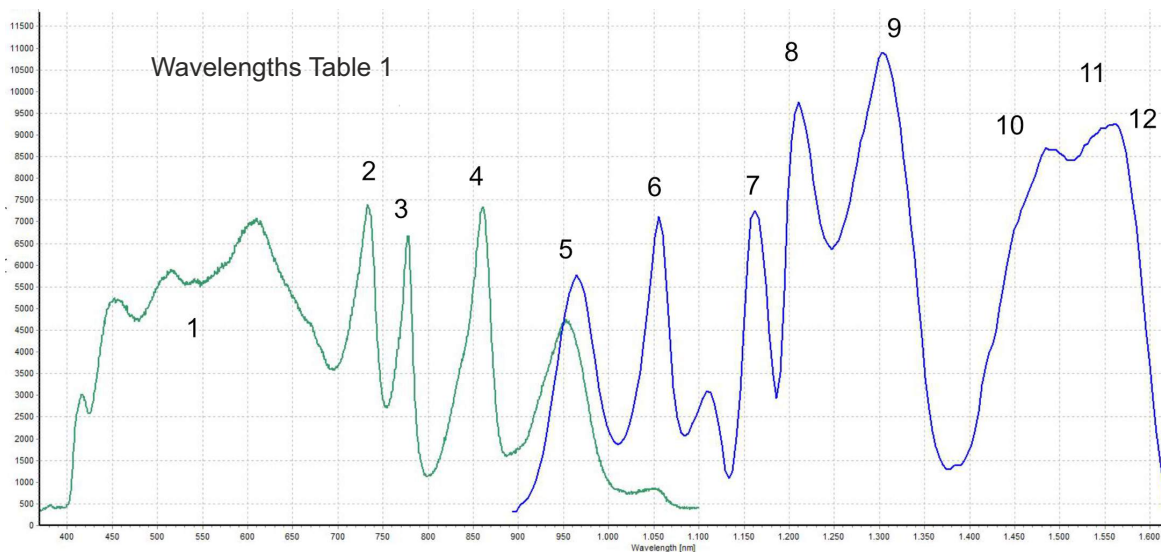


Table 1 WAVELENGTH	Radiant intensity * (mW/steradian)	Table 2 WAVELENGTH	Radiant intensity * (mW/steradian)	Table 3 WAVELENGTH	Radiant intensity * (mW/steradian)
400 - 700 nm	60mW/sr	365 nm	300 mW/sr	450 nm	300mW/sr
730 nm	70mW/sr	385 nm	300mW/sr	520 nm	300mW/sr
780 nm	84mW/sr	395 nm	300 mW/sr	625 nm	300 mW/sr
850 nm	60mW/sr	400-700 nm	150mW/sr	400-700 nm	150mW/sr
940 nm	60mW/sr	450 nm	300 mW/sr	730 nm	150mW/sr
1050 nm	60mW/sr	520 nm	250 mW/sr	850 nm	80mW/sr
1150 nm	76mW/sr	625 nm	200 mW/sr	940 nm	60mW/sr
1200 nm	60mW/sr	730 nm	150mW/sr	1050 nm	60mW/sr
1300 nm	53mW/sr	780 nm	140 mW/sr	1200 nm	60mW/sr
1450 nm	26mW/sr	850 nm	80mW/sr	1300 nm	53mW/sr
1550 nm	17mW/sr	940 nm	60mW/sr	1450 nm	26mW/sr
1650 nm	9mW/sr	980 nm	160 mW/sr	1550 nm	17mW/sr

*Custom table wavelengths on request



ATTENZIONE / WARNING

- Prodotto elettrico per uso professionale, può essere installato solo da personale qualificato.
 - Electrical device exclusively for professional use. Installation can be done by qualified personnel only.
 - In caso di danneggiamento del cavo di alimentazione, la sostituzione del medesimo deve essere eseguita esclusivamente presso la casa madre.
 - In case of power supply wire damage, its replacement has to be done at the head office exclusively.
- Perdita di GARANZIA a causa di uso improprio e manomissione del prodotto.
 Warranty loss in case of inappropriate use and tampering.



Genesi LUX® a division of

Genesi Elettronica srl

V. Bachelet, 3 - 41057 Spilamberto - MODENA -
 Tel. 059785566 - info@genesi-lux.it - www.genesi-lux.it



Organization with a certified ISO 9001:2015 Quality Management System