



a TKH Vision brand

Polarized

exo264ZU3

The Polarized cameras measure the degree of polarization and the planes of polarization from a single image. The high resolution with global shutter, the high optical dynamic and high frame rate allow detailed structural analysis of even moving objects.

The cameras are based on our fanless EXO industrial camera with milled aluminum body.

Technical Highlights

- LUT, ROI, Burst Mode
- Electrical and optical inputs
- Up to 60°C operating temperature
- Integrated 4-channel strobe controller
- Industrial TTL-24V I/O interface with SafeTrigger, logic functions, programmable sequencers and timers, RS232 interface

POL
POLARIZED
WAVELENGTH



LED
4 INTEGRATED
LED CONTROLLERS

SEQ
INTEGRATED
SEQUENCER

STT
SAFE TRIGGER
TECHNOLOGY

PLC
PROGRAMMABLE
LOGIC CONTROL

CHAT WITH US



Specifications

| | |
|--------------------|---------------------|
| Resolution [MP] | 5 MP |
| Resolution (h x v) | 2448 x 2048 px |
| Frame rate(max.) | 35 fps |
| Chroma | mono polarized |
| Interface | USB3.0 (Micro-B) |

Sensor

| | |
|---------------------|---------------------------|
| Sensor | IMX264MZR (polarized) |
| Manufacturer | Sony |
| Sensor type | Area CMOS |
| Shutter type | global shutter |
| Sensor size (h x v) | 8.45 x 7.07 mm |
| Optical diagonal | 11.01 mm |
| Sensor format | 11.1mm (Type 2/3) |
| Pixel size (h x v) | 3.45 x 3.45 μm |

Camera

| | |
|---------------------|------------------------------|
| Exposure modes | MANUAL;AUTO;EXTERNAL |
| Trigger modes | INTERNAL;SOFTWARE;EXTERNAL |
| Exposure time (min) | 21 μs |
| Exposure time (max) | 60 sec (external ∞) |
| Pixel format / max | mono8, mono12packed / 12 bit |
| Gain modes / max | manual, auto / 48 dB |
| Internal memory | 256 MB SDRAM, 32 MB Flash |

Feature Set

| | |
|-------------------------|-----|
| AOI | yes |
| LUT | yes |
| Offset | yes |
| Binning | yes |
| Image flip | yes |
| Shading correction | yes |
| Defect pixel correction | yes |
| Sequencer | yes |

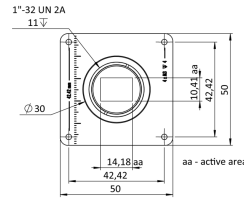
Housing

| | |
|---------------------------------|------------------------------|
| Lens mount | C-Mount |
| Dimensions (w x h x d) | 50 x 50 x 43 mm |
| Weight | 138 g |
| Operating temperature (housing) | -10 to 60 $^{\circ}\text{C}$ |
| Ambient humidity | 10 to 90 % (non-condensing) |
| Protection class | IP40 |

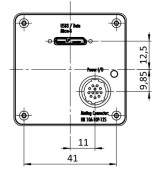
I/O-Interfaces

| | |
|-------------------|--------------------------------|
| Input up to 24V | 2 x |
| Input OPTO | 1 x |
| Output open drain | 4 x |
| I/O RS-232 | 1 x |
| Power supply | 10 to 25 V (DC) |
| Power consumption | 4.5 W (dep. on operating mode) |

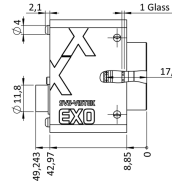
front



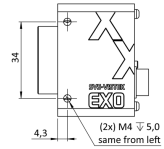
back



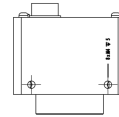
cross section



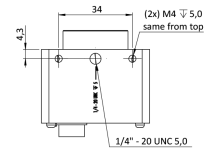
right side



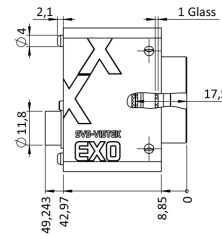
top



bottom

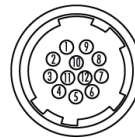


cross section



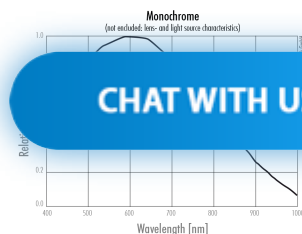
Pinout Mating Connector

Hirose 12 Pin



| | | | |
|---|-------------------------|----|--------------------|
| 1 | VIN - (GND) | 7 | OUT 1 (open drain) |
| 2 | VIN + (10 V to 25 V DC) | 8 | OUT 2 (open drain) |
| 3 | IN 4 (RXD RS232) | 9 | IN 3 + (opto In +) |
| 4 | OUT 4 (TXD RS232) | 10 | IN 3 - (opto In -) |
| 5 | IN 1 (0 - 24V) | 11 | OUT 3 (open drain) |
| 6 | IN 2 (0 - 24V) | 12 | OUT 0 (open drain) |

Spectral Response *



* Sensor data – excludes camera cover- or IR-cut filter characteristics

SVS-VISTEK GMBH

© 2024–2025 SVS-Vistek GmbH

Ferdinand-Porsche-Str. 3 82205 Gilching Germany phone +49 8105 3987-60 info@svs-vistek.com

CHAT WITH US

